



Tapered Screw-Vent® Implant System



Performance thousands count on, case after case.

Get behind the platform of choice.

What's behind the documented success of the *Tapered Screw-Vent* Implant System? For starters, its friction-fit internal hex platform reduces stress on crestal bone and resists abutment screw loosening, thus creating favorable conditions for bone level maintenance.¹⁻³ Delivering initial implant stability, it also enables immediate restorations and loading where indicated and clinically appropriate. And with its versatility to treat a myriad of cases, documented results and other great features, the *Tapered Screw-Vent* Implant System has given peace of mind to thousands of clinicians just like you.



Clinical versatility thousands count on.



Clinical and surgical versatility for a myriad of implant applications.

Delivering fully integrated one-stage and two-stage solutions, one-piece implants and the latest in esthetics, the *Tapered Screw-Vent* Implant System offers the versatility to meet a multitude of clinical needs. Forming the basis of the system is the *Tapered Screw-Vent* Implant, which features Zimmer's proprietary internal hex connection with lead-in bevel that has been in use for over 20 years. With its time-tested design and continuous innovations, the *Tapered Screw-Vent* Implant System provides both clinical and surgical versatility for a myriad of implant applications.

A variety of caps and copings simplify the restorative process.



Surgical versatility.

- One-piece and two-piece implants
- One-stage and two-stage surgical protocols
- Immediate, early or traditional loading – all from one system
- Common surgical instrumentation used to place all implants in the system

Restorative versatility.

- Wide variety of prosthetic options to restore single-tooth, multiple-tooth and overdenture cases
- Contour Restorative Components are utilized to restore both *Hex-Lock*™ Contour Abutments and *Zimmer*® One-Piece Implants

Continuous innovation keeps us ahead of the curve.

At Zimmer Dental, we continually develop solutions to address today's clinical challenges, like immediate restorations and esthetics. Recent additions to the *Tapered Screw-Vent* Implant System include:

- *Hex-Lock* Contour Abutments and Components to facilitate restorative ease – abutments act as prepared teeth for restoration like natural crown-and-bridge
- *Zimmer* One-Piece Implants – that combine the documented *Tapered Screw-Vent* Implant and *Hex-Lock* Contour Abutment into one, unified component – to bring greater simplicity and convenience to the restorative process

Documented results speak for themselves.



Zimmer One-Piece Implant alongside previously-placed Screw-Vent® Implants. X-ray courtesy of Dr. Zeev Ormianer, Ramat Gan, Israel.

A time-tested design with almost a decade of clinical use.

With almost a decade of clinical use, seven prospective studies have cumulatively reported on 1,165 *Tapered Screw-Vent* Implants in 475 patients with the following results:

- Mean implant survival rates ranging from 95.45% to 100.00%, with a cumulative survival rate of 99.05%⁴⁻¹⁰
- Individual study mean bone level changes ranging from none⁴ to -1.66mm⁵

Results may vary depending on patient selection and clinician experience.

Initial stability for immediate restorations.



3.0mm Zimmer One-Piece Implant replacing a maxillary lateral incisor.
Photos courtesy of Dr. Paul Petrunaro, Lake Elmo, Minnesota.

Implants in the Tapered Screw-Vent Implant System are designed to achieve high primary stability.

These days, more and more patients expect to leave implant surgery with a tooth in place. Meeting such demands requires initial implant stability. With multi-lead threads, tapered bodies, and soft and dense bone surgical protocols, the *Tapered Screw-Vent* Implant System is designed to achieve high primary stability.

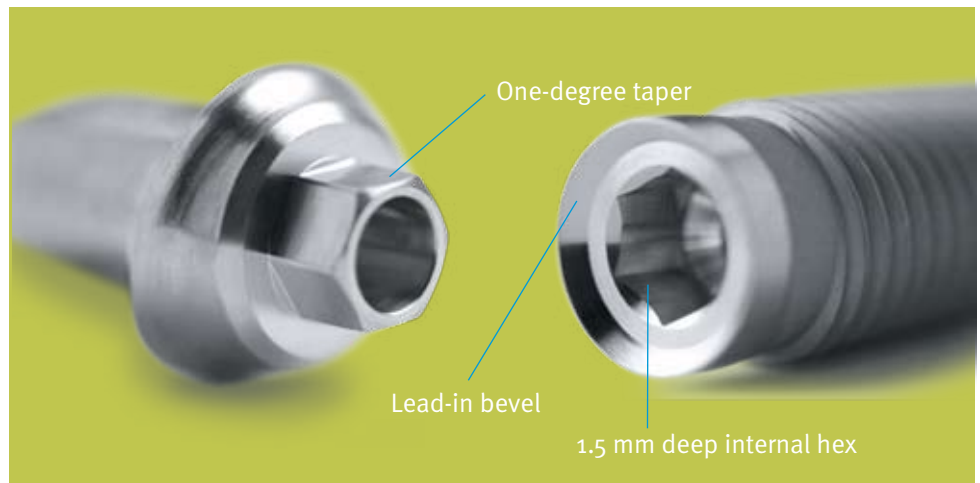
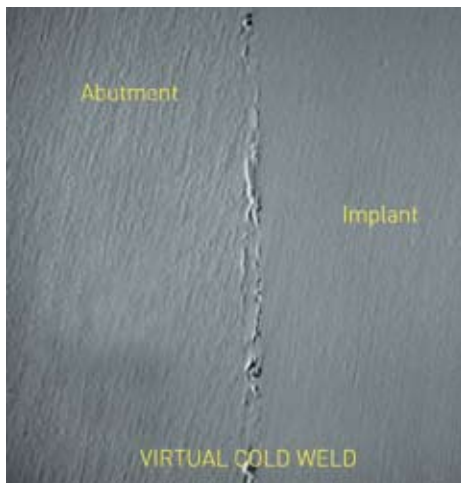
- High primary stability enables immediate restorations and single-tooth immediate loading of *Tapered Screw-Vent*^{6,11-12} and *Zimmer* One-Piece Implants where indicated and clinically appropriate
- Soft bone surgical protocol compresses bone to provide additional stability in poor quality sites¹²
- In dense bone, the stepped finishing drill allows apical bone engagement for initial stability¹²

Increased placement options.

A tapered design, a one-piece implant and a range of size and angle options allow for easy placement in a variety of locations.

- Tapered implant design allows placement between convergent roots, in areas with labial or lingual concavities, and in immediate extraction sites
- 3.0mm *Zimmer* One-Piece Implants, available in both straight and 17° versions, allow for placement in the tight interdental spaces of the maxillary laterals and mandibular incisors

An implant platform designed for success.



The Tapered Screw-Vent Implant System has set the standard for implant-abutment platforms.

Zimmer's proprietary friction-fit internal hex connection is a unique combination of designs that has been shown to reduce stress on crestal bone and to resist abutment screw loosening, thus creating favorable conditions for bone level maintenance.¹⁻³

- A lead-in bevel and 1.5mm deep internal hex reduce horizontal bone stresses and distribute forces deep within the implant, thereby shielding the retention screw from excessive loading¹⁻³
- The proprietary friction-fit component of the connection virtually eliminates abutment micromovement (a primary cause of screw loosening) when tightened to the recommended 30 Ncm of applied torque.¹ This means fewer return patient visits, less chair time, and increased patient satisfaction

Esthetic restorations made easy.



Zimmer® Contour Ceramic Abutments restoring maxillary central incisors.
Photos courtesy of Dr. Paul Petrungaro, Lake Elmo, Minnesota.

Offering a comprehensive array of implants, abutments, accessories and protocols, the *Tapered Screw-Vent* Implant System delivers the tools you need for easy and esthetic restorations.

- *One Abutment-One Time*™ Protocol leaves tissue undisturbed by placing a final abutment during tissue healing
- Contour Ceramic Abutments in zirconia provide a natural-colored base for all-ceramic restorations
- Reduced facial margins on *Hex-Lock* Contour Abutments mimic the profile of soft tissue,¹³ minimizing the potential for metal exposure if tissue recedes
- Snap-on impression caps allow for easy abutment-level impressions
- Contour Plastic Copings facilitate provisional and final restorations
- *Zimmer* One-Piece Implants, with attached abutments, require minimal or no preparation and use the same Caps and Copings as *Hex-lock* Contour Abutments

Delivering value to the site.



Tapered Screw-Vent

Implants are packaged with a multi-functional Fixture Mount/Transfer that allows for added value, efficiency and convenience.

- Used as a means to deliver the implant to the surgical site and provides convenient color-coded identification that matches the implant analogs
- Functions as a transfer that is conveniently pre-attached to the implant. Surgeons can take an immediate index or impression, or restoring doctors can use it after the healing period
- May also be prepared and function as a temporary abutment for use while the final restoration is fabricated

Visit www.zimmerdental.com/testimonials.aspx to submit your own *Tapered Screw-Vent* Implant System success story.
For clinical articles and abstracts documenting the *Tapered Screw-Vent* Implant System, please visit our online bibliography at www.zimmerdental.com/lib_bibliography.aspx.

- ¹ Binon PP. The evolution and evaluation of two interference-fit implant interfaces. *Postgraduate Dent.* 1996;3:3-13.
- ² Chun HJ, Shin HS, Han CH, Lee SH. Influence of Implant Abutment Type on Stress Distribution in Bone Under Various Loading Conditions Using Finite Element Analysis. *Int J Oral Maxillofac Implants.* 2006;21:105-202.
- ³ Mihalko WM, May TC, Kay JF, Krause WR. Finite element analysis of interface geometry effects on the crestal bone surrounding a dental implant. *Implant Dent.* 1992;1:212-217.
- ⁴ Ormianer Z, Palti A. Long-term clinical evaluation of tapered multi-threaded implants: results and influences of potential risk factors. *J Oral Implantol.* 2006;32:300-307.
- ⁵ Khayat PG, Milliez SN. Prospective clinical evaluation of 835 multithreaded Tapered Screw-Vent implants: results after two years of functional loading. *J Oral Implantol.* 2007;34:225-231.
- ⁶ Siddiqui AA, O'Neal R, Nummikoski P, Pituch D, Ochs M, Huber H, Chung W. Immediate loading of single-tooth restorations: 1-year report from a 3-year prospective clinical study. *J Oral Implantol.* 2008. Accepted for publication.
- ⁷ Artzi Z, Parson A, Nemcovsky CE. Wide-diameter implant placement and internal sinus membrane elevation in the immediate postextraction phase: clinical and radiographic observations in 12 consecutive molar sites. *Int J Oral Maxillofac Implants.* 2003;18:242-249.
- ⁸ Ormianer Z, Schirotti G. Maxillary single-tooth replacement utilizing a novel ceramic restorative system: results to 30 months. *J Oral Implantol.* 2006;32:190-199.
- ⁹ Ormianer Z, Garg AK, Palti A. Immediate loading of implant overdentures using modified loading protocol. *Implant Dent.* 2006;15:35-40.
- ¹⁰ Steigmann M, Wang HL. Esthetic buccal flap for correction of buccal fenestration defects during flapless immediate implant surgery. *J Periodontol.* 2006;77:517-522.
- ¹¹ Shiigai T. Pilot Study in the Identification of Stability Values for Determining Immediate and Early Loading of Implants. *J Oral Implantol.* 2007;33:13-22.
- ¹² Rosenlicht JL. Advancements in Soft Bone Implant Stability. *West Indian Dent J.* 2002;6:2-7.
- ¹³ Muller HP, Eger T. Masticatory mucosa and periodontal phenotype: a review. *Int J Periodontics Restorative Dent.* 2002;22:172-183.

For more information about our Products and Educational Opportunities, contact us:

1900 Aston Avenue
Carlsbad, CA 92008-7308, USA

In the U.S. 800 854 7019
To fax an order 888 225 2483
Outside the U.S. +1 760 929 4300
Australia +61 (0)2 9950 5444
Canada +1 905 567 2073 or 1 800 265 0968

France +33 (0)1 45 12 35 35
Germany +49 (0)761 1 56 47 0
Israel +972 (0)3 6124242
Italy +39 043 855 5573
Spain +34 93 846 05 43

To receive our eNews visit us at http://www.zimmerdental.com/news_eNewsletterSignUp.aspx



www.zimmerdental.com